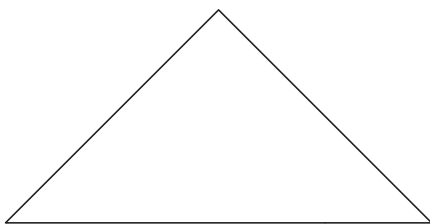
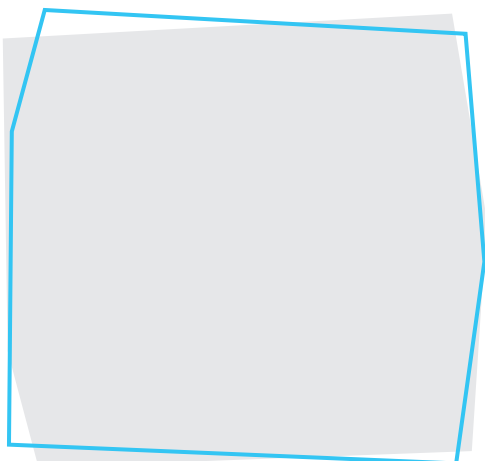


利用貼紙頁中的七巧板，依指示拼砌圖形，把拼砌結果貼出來。

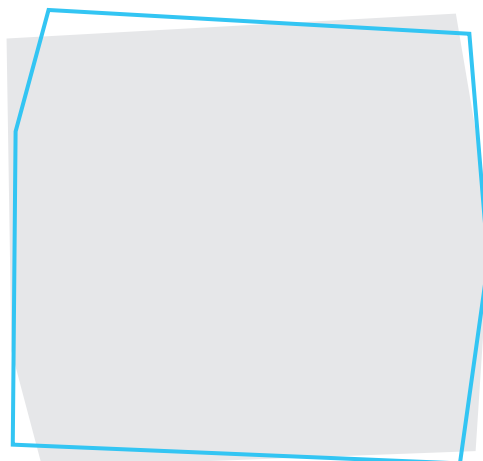
- ① 用 4 塊圖形板拼砌下面的圖形。



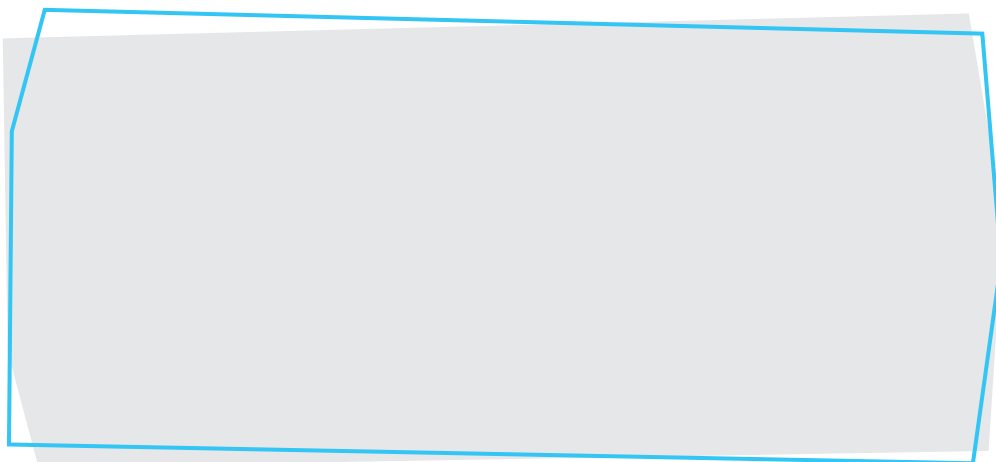
- ② 用 2 塊圖形板拼砌一個平行四邊形。



- ③ 用 5 塊圖形板拼砌一個正方形。

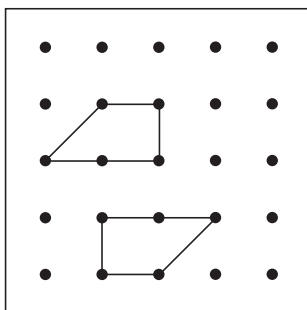


- ④ 用 6 塊圖形板拼砌一個梯形。

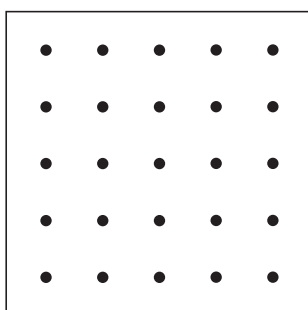


利用釘點紙上的圖形組成指定的圖形，並把它們畫在釘點紙上。

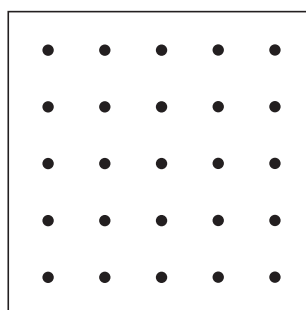
⑤



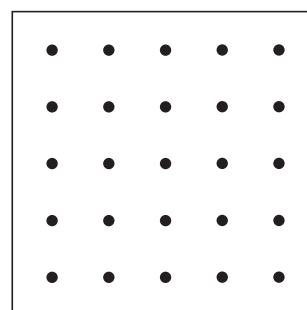
a 長方形



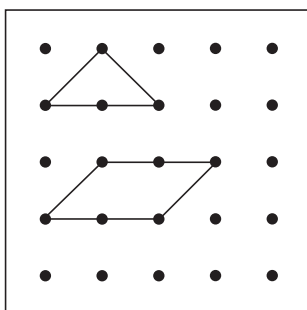
b 六邊形



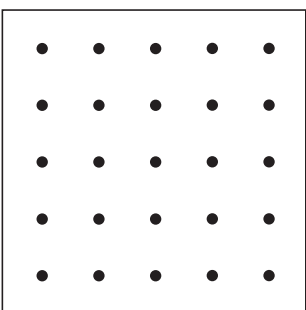
c 七邊形



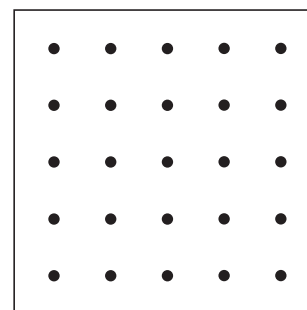
⑥



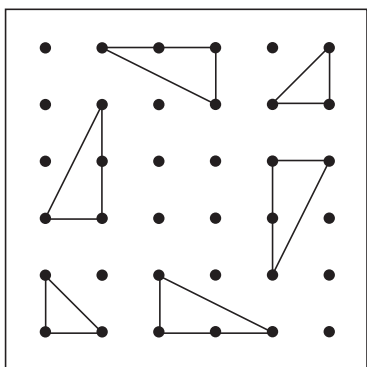
a 梯形



b 五邊形



⑦



正方形

